

## HHC Caramels

Sample ID: SA-211223-6308  
Batch: 10.900.HHC  
Type: Finished Products  
Matrix: Edible - Gummy

Received: 12/30/2021  
Completed: 01/20/2022



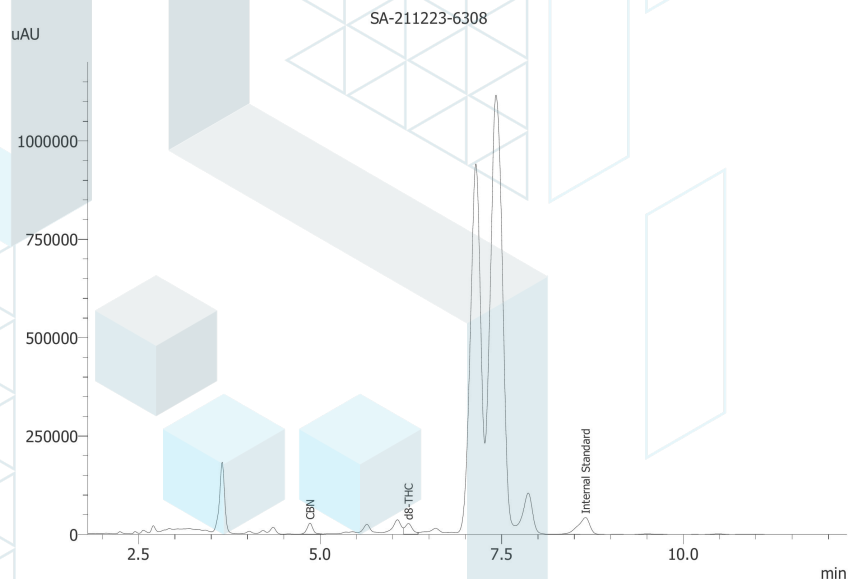
## Summary

Test	Date Tested	Status
Cannabinoids	01/20/2022	Tested
Cannabinoids (Additional)	01/20/2022	Tested

## Cannabinoids by HPLC-PDA, LC-MS/MS, and/or GC-MS/MS

<b>ND</b>	<b>0.00212 %</b>	<b>0.00287 %</b>	<b>Not Tested</b>	<b>Not Tested</b>	<b>Yes</b>
Total Δ9-THC	Δ8-THC	Total Cannabinoids	Moisture Content	Foreign Matter	Internal Marker Recovered

Analyte	LOD (%)	LOQ (%)	Result (%)	Result (mg/g)
CBC	0.00009	0.00028	ND	ND
CBCA	0.00018	0.00054	ND	ND
CBCV	0.00006	0.00018	ND	ND
CBD	0.00008	0.00024	ND	ND
CBDA	0.00004	0.00013	ND	ND
CBDV	0.00006	0.00018	ND	ND
CBDVA	0.00002	0.00006	ND	ND
CBG	0.00006	0.00017	ND	ND
CBGA	0.00005	0.00015	ND	ND
CBL	0.00011	0.00033	ND	ND
CBLA	0.00012	0.00037	ND	ND
CBN	0.00006	0.00017	0.000750	0.00750
CBNA	0.00006	0.00018	ND	ND
Δ8-THC	0.0001	0.00031	0.00212	0.0212
Δ9-THC	0.00008	0.00023	ND	ND
Δ9-THCA	0.00008	0.00025	ND	ND
Δ9-THCV	0.00007	0.00021	ND	ND
Δ9-THCVA	0.00006	0.00019	ND	ND
<b>Total Δ9-THC</b>			<b>ND</b>	<b>ND</b>
<b>Total CBD</b>			<b>ND</b>	<b>ND</b>
<b>Total</b>			<b>0.00287</b>	<b>0.0287</b>



ND = Not Detected; NT = Not Tested; LOD = Limit of Detection; LOQ = Limit of Quantitation; RL = Reporting Limit; Δ = Delta; Total Δ9-THC = Δ9-THCA \* 0.877 + Δ9-THC; Total CBD = CBDA \* 0.877 + CBD;

*Alex Morris*

Generated By: Alex Morris  
Quality Assurance Manager  
Date: 01/21/2022

*Scott Caudill*

Tested By: Scott Caudill  
Senior Scientist  
Date: 01/20/2022



ISO/IEC 17025:2017 Accredited  
Accreditation #108651



This product or substance has been tested by KCA Laboratories using validated testing methodologies and an ISO/IEC 17025:2017 accredited quality system. Values reported relate only to the product or substance tested. The reported result is based on a sample weight. Unless otherwise stated, results of tests performed on all quality control samples met criteria for acceptance established by KCA Laboratories. KCA Laboratories makes no claims as to the efficacy, safety or other risks associated with any detected or non-detected amounts of any substances reported herein. This Certificate of Analysis shall not be reproduced except in full, without the written approval of KCA Laboratories. KCA Laboratories can provide measurement uncertainty upon request.

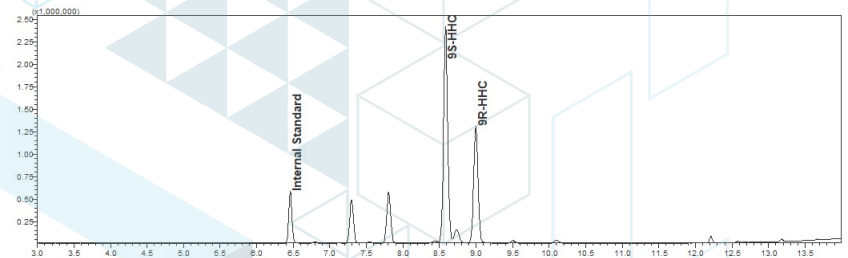
## HHC Caramels

Sample ID: SA-211223-6308  
 Batch: 10.900.HHC  
 Type: Finished Products  
 Matrix: Edible - Gummy

Received: 12/30/2021  
 Completed: 01/20/2022

## Cannabinoids by HPLC-PDA, LC-MS/MS, and/or GC-MS/MS

Analyte	LOD (%)	LOQ (%)	Result (%)	Result (mg/g)
(9R)-HHC	0.005	0.025	0.127	1.27
(9S)-HHC	0.005	0.025	0.256	2.56
<b>Total Additional Cannabinoids</b>			<b>0.383</b>	<b>3.83</b>
<b>Total</b>			<b>0.386</b>	<b>3.86</b>



ND = Not Detected; NT = Not Tested; LOD = Limit of Detection; LOQ = Limit of Quantitation; RL = Reporting Limit; Δ = Delta; Total Δ9-THC = Δ9-THCA \* 0.877 + Δ9-THC; Total CBD = CBDA \* 0.877 + CBD;



Generated By: Alex Morris  
 Quality Assurance Manager  
 Date: 01/21/2022



Tested By: Jasper van Heemst  
 Principal Scientist  
 Date: 01/20/2022



ISO/IEC 17025:2017 Accredited  
 Accreditation #108651

