

Acapulco Gold-HHC-Preroll

 Sample ID: SA-211223-6306
 Batch: 8.948.HHC
 Type: Finished Products
 Matrix: Plant - Flower

 Received: 12/30/2021
 Completed: 01/18/2022

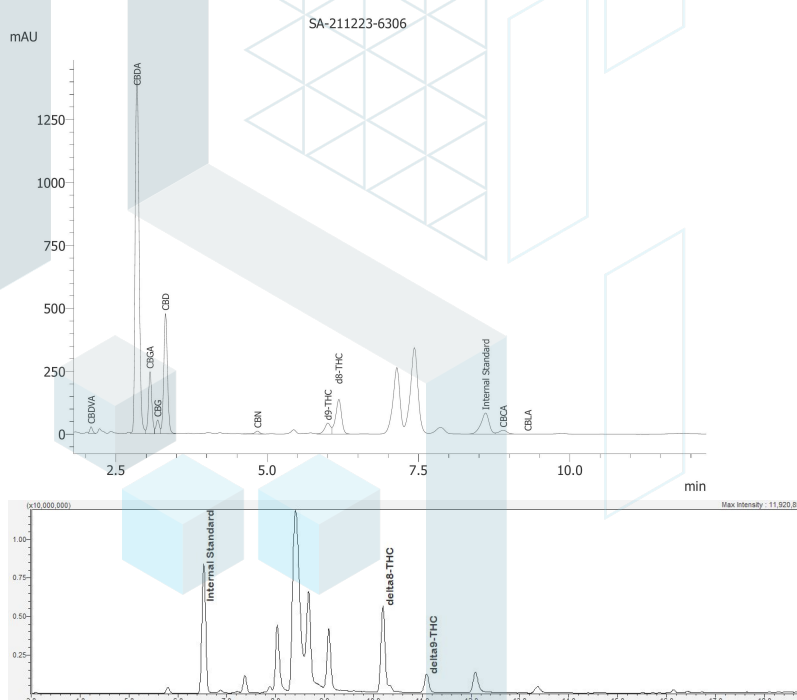

Summary

Test	Date Tested	Status
Cannabinoids	01/18/2022	Tested
Cannabinoids (Additional)	01/18/2022	Tested

Cannabinoids by HPLC-PDA, LC-MS/MS, and/or GC-MS/MS

0.230 %	9.19 %	12.6 %	Not Tested	Not Tested	Yes
Total Δ9-THC	Total CBD	Total Cannabinoids	Moisture Content	Foreign Matter	Internal Marker Recovered

Analyte	LOD (%)	LOQ (%)	Result (%)	Result (mg/g)
CBC	0.00095	0.0028	ND	ND
CBCA	0.00181	0.0054	0.284	2.84
CBCV	0.0006	0.0018	ND	ND
CBD	0.00081	0.0024	2.17	21.7
CBDA	0.00043	0.0013	8.00	80.0
CBDV	0.00061	0.0018	ND	ND
CBDVA	0.00021	0.0006	0.0626	0.626
CBG	0.00057	0.0017	0.205	2.05
CBGA	0.00049	0.0015	0.830	8.30
CBL	0.00112	0.0033	ND	ND
CBLA	0.00124	0.0037	<LOQ	<LOQ
CBN	0.00056	0.0017	0.0321	0.321
CBNA	0.0006	0.0018	ND	ND
Δ8-THC	0.00104	0.0031	0.760	7.60
Δ9-THC	0.00076	0.0023	0.230	2.30
Δ9-THCA	0.00084	0.0025	ND	ND
Δ9-THCV	0.00069	0.0021	ND	ND
Δ9-THCVA	0.00062	0.0019	ND	ND
Total Δ9-THC			0.230	2.30
Total CBD			9.19	91.9
Total			12.6	126.0



ND = Not Detected; NT = Not Tested; LOD = Limit of Detection; LOQ = Limit of Quantitation; RL = Reporting Limit; Δ = Delta; Total Δ9-THC = Δ9-THCA * 0.877 + Δ9-THC; Total CBD = CBDA * 0.877 + CBD;



 Generated By: Ryan Bellone
 Commercial Director
 Date: 01/18/2022



 Tested By: Scott Caudill
 Senior Scientist
 Date: 01/18/2022

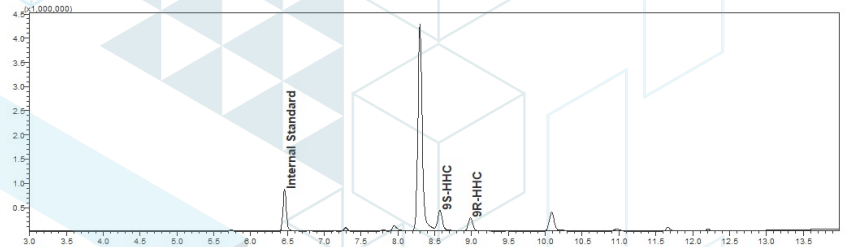

Acapulco Gold-HHC-Preroll

Sample ID: SA-211223-6306
 Batch: 8.948.HHC
 Type: Finished Products
 Matrix: Plant - Flower

Received: 12/30/2021
 Completed: 01/18/2022

Cannabinoids by HPLC-PDA, LC-MS/MS, and/or GC-MS/MS

Analyte	LOD (%)	LOQ (%)	Result (%)	Result (mg/g)
(9R)-HHC	0.2	1.	4.11	41.1
(9S)-HHC	0.2	1.	6.86	68.6
Total Additional Cannabinoids			11.0	110.0
Total			23.6	236.0



ND = Not Detected; NT = Not Tested; LOD = Limit of Detection; LOQ = Limit of Quantitation; RL = Reporting Limit; Δ = Delta; Total Δ9-THC = Δ9-THCA * 0.877 + Δ9-THC; Total CBD = CBDA * 0.877 + CBD;



Generated By: Ryan Bellone
 Commercial Director
 Date: 01/18/2022



Tested By: Jasper van Heemst
 Principal Scientist
 Date: 01/18/2022



ISO/IEC 17025:2017 Accredited
 Accreditation #108651

